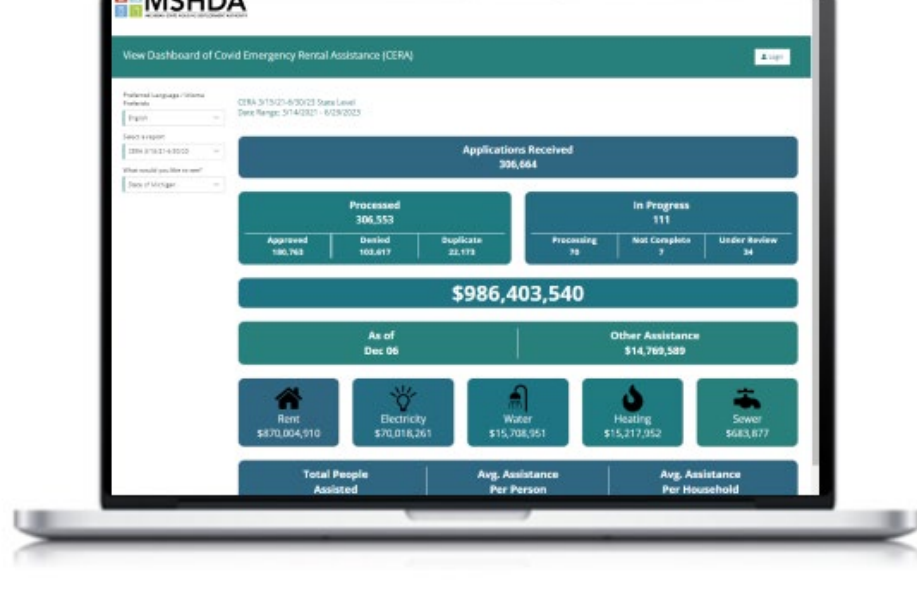


# The Kinetech Compass: Guiding You in Government Tech



## Top 8 Features to Look for a Housing Assistance App

Curious about what makes a housing assistance app tick? We've got some insights to share! Dive into our latest blog where we highlight the top 8 essential features for any housing assistance app, all based on real-world experience. Make sure your next solution is a perfect fit.

[Learn More](#)

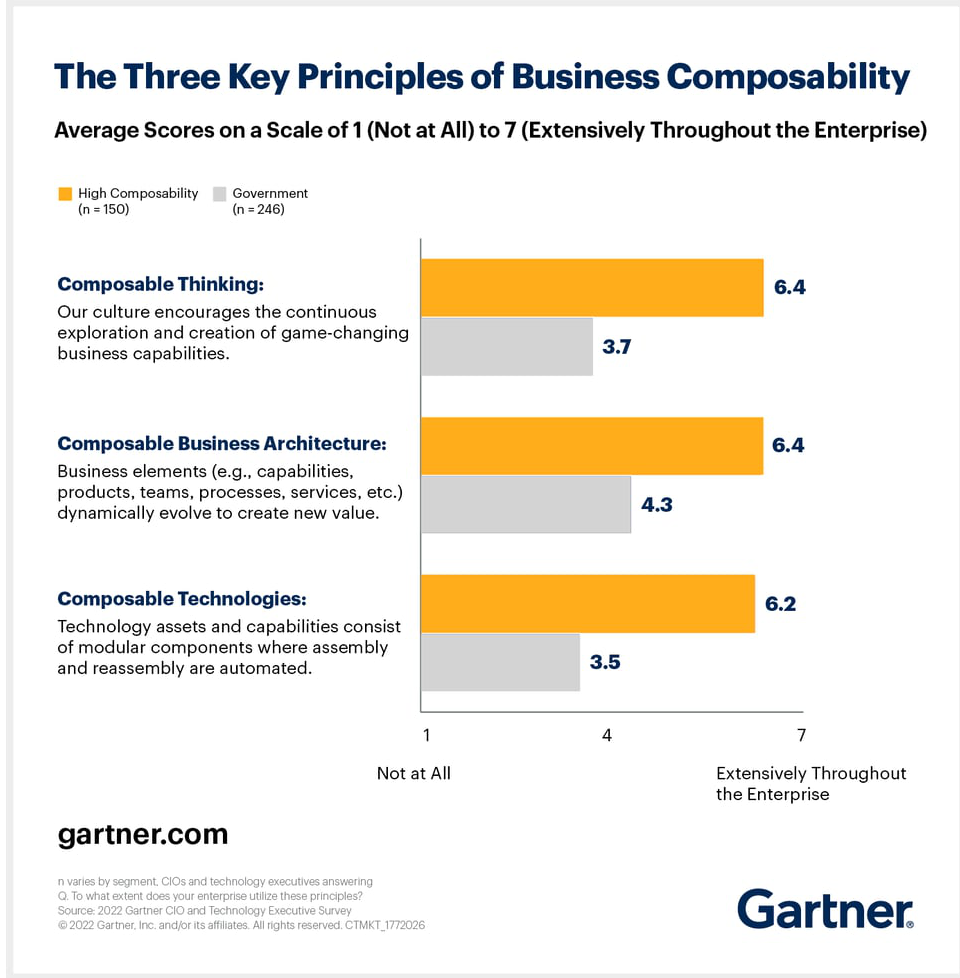


**Understanding Composable SaaS for Social Assistance Programs**  
Perfect for implementing new programs and/or modernizing outdated systems or paper, excel, or other manual processes. Modern Web Portals and Mobile Applications with out-of-the-box modules that support:

## New Page Dedicated to Social Assistance Programs

The renovation is complete! Be sure to explore our newest page diving into Kinetech's GovCloud for Social Assistance Programs. This is a composable SaaS application suite supporting federal, state, and local agency programs such as housing, utility, transportation, education, and legal.

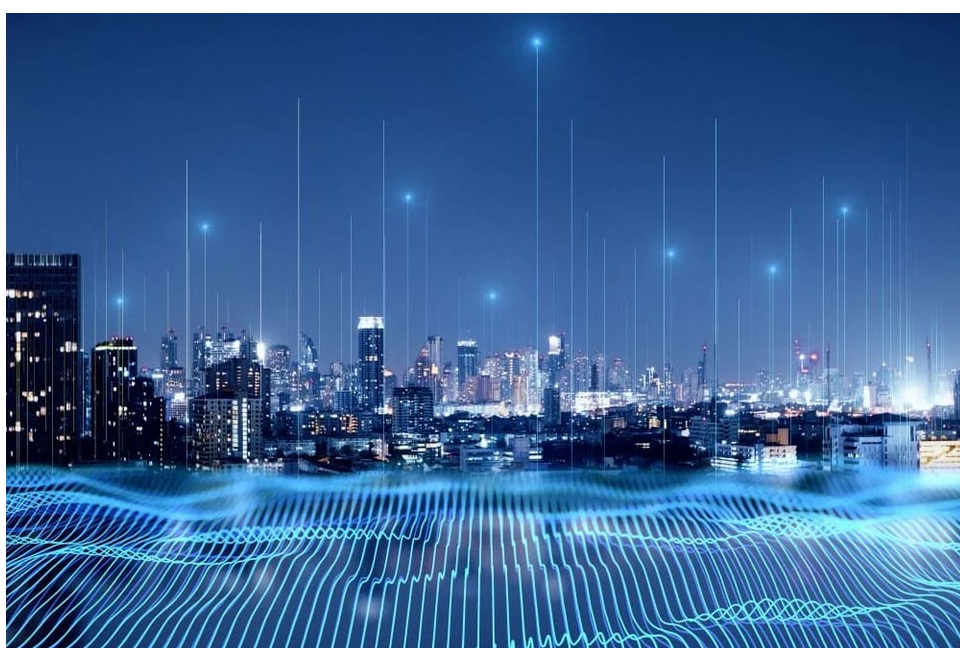
[Learn More](#)



## Gartner: What Government CIOs Need to Know About Composability

Kinetech was highlighted as a low-code leader in the 2023 Gartner Magic Quadrant, but why should this matter to you? Gartner highlights that government CIOs driving digital transformation should prioritize investing in composable capabilities to enhance performance, reduce risks, and lower operating costs, ultimately accelerating the adoption of digital government through adaptive strategy and business architecture assessments.

[Read the Story](#)



## Distributing ~\$1 Billion USD: How Michigan.gov Rapidly Responded with the GovTech Cloud

Michigan.gov streamlined its application and relief distribution process, processing over \$1 billion USD in aid, all in less than 30 days! Read the case study for an insider look at the challenges, solutions, and outcomes that shaped this groundbreaking project.

[Learn More](#)



## San Antonio Department of Human Services Customer Success

*"It's a low-income population that is in crisis when they come in and talk to us, that has a lot of life challenges based on the kinds of financial emergencies that they're experiencing... Building something that is customized to the needs of that kind of client population was not easy to do, and it was something that Kinetech really excelled at."* - Richard Keith | Assistant Director of DHS



Want to get in touch with the Kinetech team? [Contact Us](#)